

# MONTHLY MEMBERSHIP PROGRESS REPORT

LOCATION JAMAICA

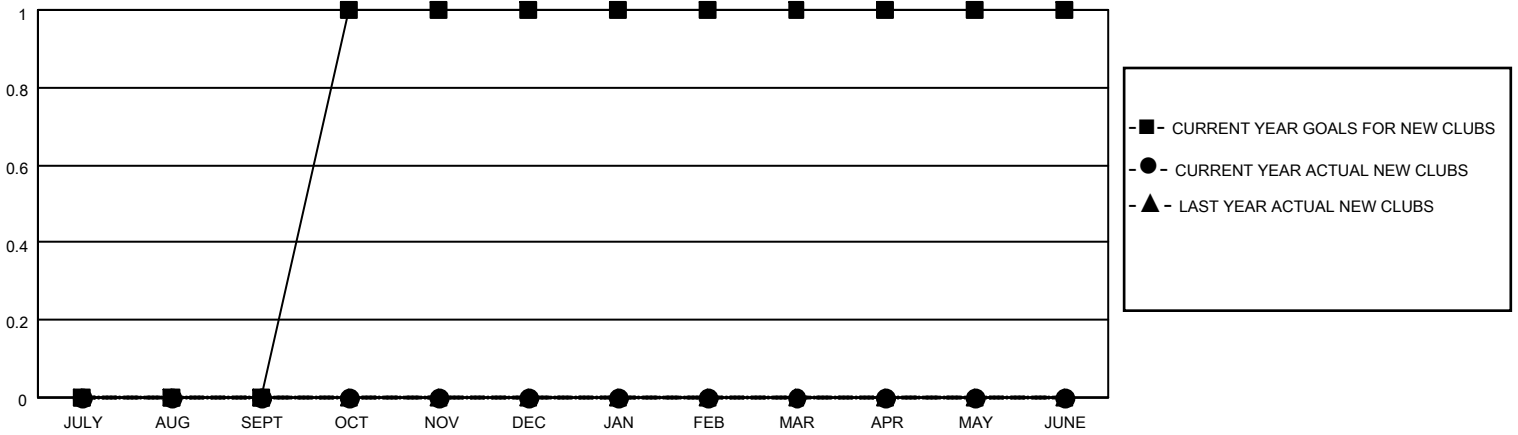
District 60 B

Results as of: 6/30/2021

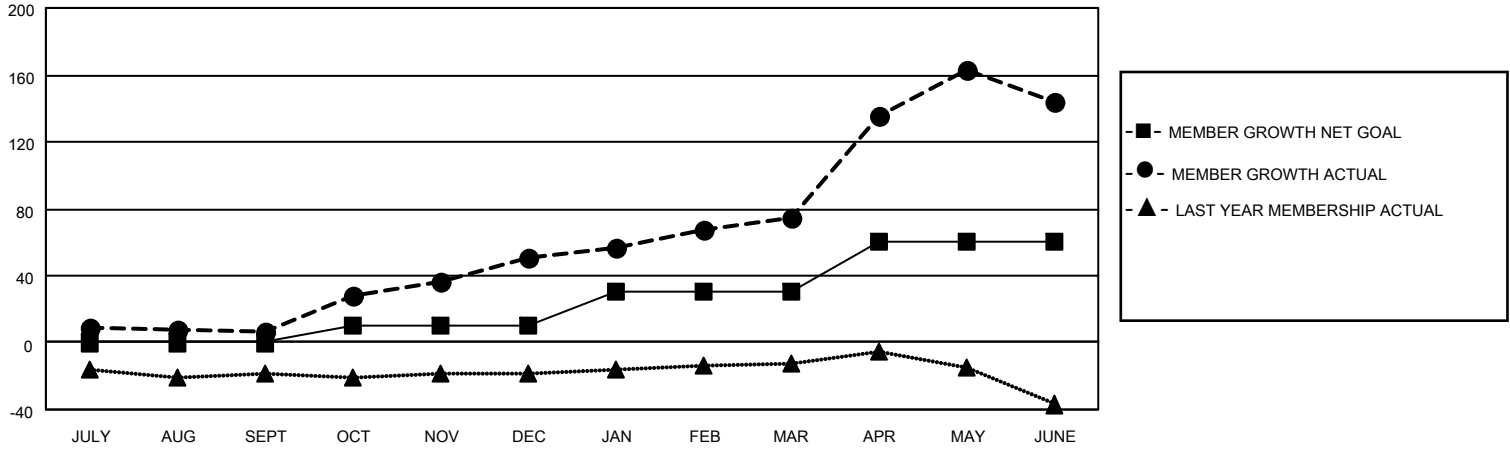
Clubs			
RESULTS FOR 2020-2021			
QUARTER	NEW CLUB GOAL	NEW CLUBS	DROPPED CLUBS
JULY/AUG/SEPT	0	0	0
OCT/NOV/DEC	1	0	0
JAN/FEB/MAR	0	0	0
APR/MAY/JUNE	0	0	0

Members			
RESULTS FOR 2020-2021			
QUARTER	MEMBER GROWTH NET GOAL	MEMBER GROWTH ACTUAL	DROPPED MEMBERS ACTUAL (including transfers)
JULY/AUG/SEPT	0	24	16
OCT/NOV/DEC	10	72	26
JAN/FEB/MAR	20	39	15
APR/MAY/JUNE	30	120	49

**GOALS AND ACTUAL NEW CLUBS CUMULATIVE**



**GOALS AND ACTUAL MEMBERS CUMULATIVE**



**DROPPED CLUBS: 0**

**43 CLUBS OF 60 ADDED 1 OR MORE NEW MEMBERS**

**GENDER DISTRIBUTION**

MALE 774 (39.17%)  
FEMALE 1,202 (60.83%)

**DROPPED MEMBERS**

DECEASED	22
CLUB CANCELLED	0
OTHER	84
<b>TOTAL</b>	<b>106</b>

[CLICK HERE FOR CUMULATIVE MEMBERSHIP DATA](#)

TOTAL FAMILY UNIT MEMBERS	70
FAMILY MEMBERS PAYING HALF DUES	37